



Interactive map user guidance

To accompany the Landscape and Townscape Supplementary Planning Document
2022

JANUARY 2022

Planning Policy Team – local.plan@huntingdonshire.gov.uk

Disclaimer: This map has been created to aid the assessment and determination of planning applications. Whilst every effort has been made to ensure the accuracy of the data presented through this map is current and up to date, the Council cannot be held responsible for the misuse or misinterpretation of any information.

Introduction

The Landscape and Townscape Supplementary Planning Document: Consultation Draft 2021 is accompanied by an [interactive map](#). The map enables residents, agents and planning officers to better navigate and access the information and apply the guidance within the revised SPD. Maps have also been included within the revised SPD.

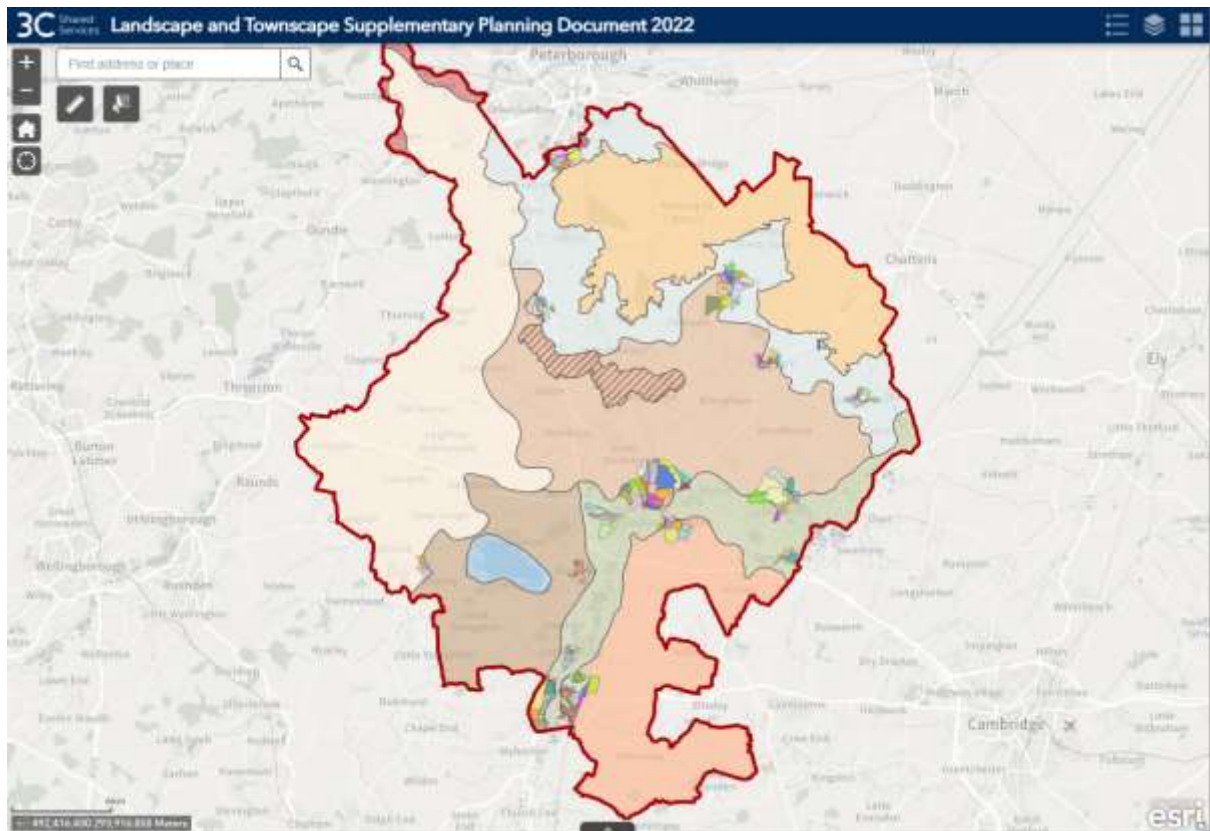
This user guide has been produced to walk through the features and capabilities of the interactive map.

This is on a web-based mapping portal which runs in an internet browser such as Internet Explorer, Chrome and Edge.

The data found within the interactive map includes:

- Landscape character areas
- Character areas for settlements within spatial planning areas and key service centres
- Heritage assets – conservations area, listed buildings, scheduled monuments and registered parks and gardens
- Nature – including internationally, national and locally designated sites and ancient woodland
- Green infrastructure priority areas and projects
- Agricultural land class

When the map is opened, it will look like this:



Glossary of key terms

Attribute Table	A database or table containing information about the features within a layer. These are arranged so that each row represents a feature.
Basemap	A basemap provides a background, or visual context, for the data in a map.
Coordinates	A set of values represented by the letters x, y, that define a position within a spatial reference.
Layer	The visual representation of a geographic dataset in any digital map.
Legend	The description of the types of features included in a map. Legends often use graphics of symbols or examples of features from the map with a written description of what each symbol or graphic represents.
Overview map	The Overview map displays the current extent of the map within the context of a larger area and updates whenever the map extent changes.

Features and capabilities

There are several tools available to review, query, and interpret map data. A walk through of these is provided in the subsequent pages and cover the following:

Features and capabilities	4
Address search/locations search	5
Navigation tools	5
Overview map	6
Coordinates	7
Map legend	8
Layer list	8
Basemap gallery	10
Identify/Info tool	10
Measure tool	11
Select tool	13

Address search/locations search





In the top left corner of the map you will find the address search tool.



Type a place name or address into the text box. As you type, the search bar will list suggestions. To search, press Enter on the keyboard or press on the magnifying glass icon. This will zoom to the address in the search bar.

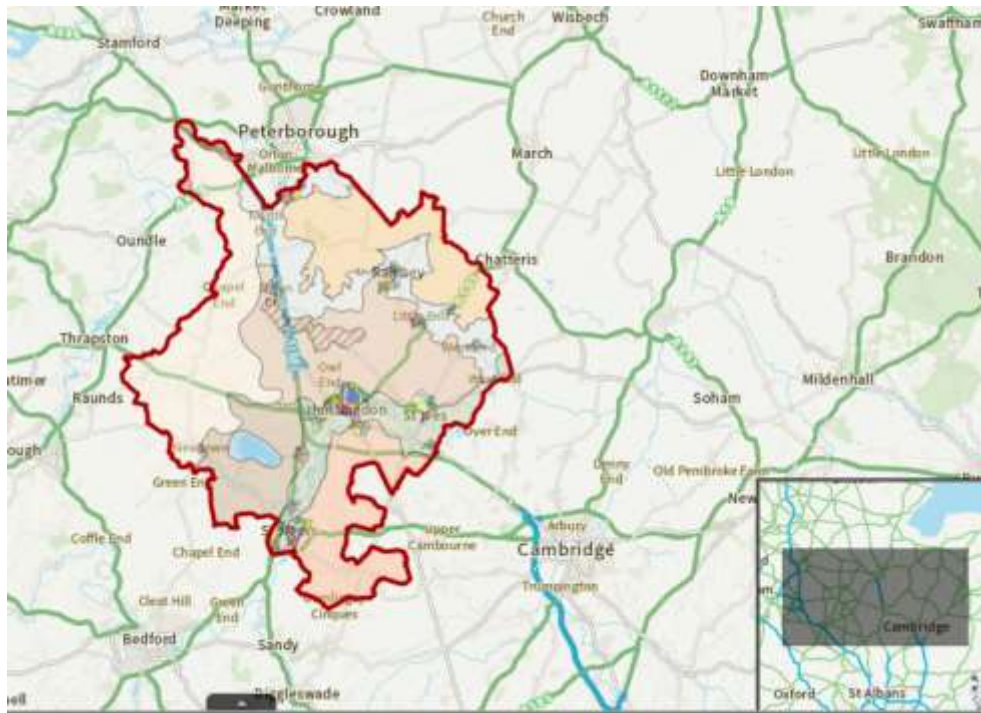
Navigation tools

In the top left corner of the map you will find the map navigation tools which allow you to zoom in or out, revert to default map extent and zoom to your location:

- Click  to zoom in or scroll up with mouse wheel
- Click  to zoom out or scroll down with mouse wheel
- Click  to revert to the original extent of map on start-up
- Click  to zoom to your location

Overview map

The Overview map displays the current extent of the map within the context of a larger area and updates whenever the map extent changes. The current extent of the map is represented in the overview map as a grey rectangle that can be dragged to modify the extent of the current view.



The overview tool is available at the bottom right corner of the map (you may need to minimise the legend/layer/basemap gallery tab on the right-hand side to see it). You can expand or minimise the tool by clicking on the arrow circled in red:



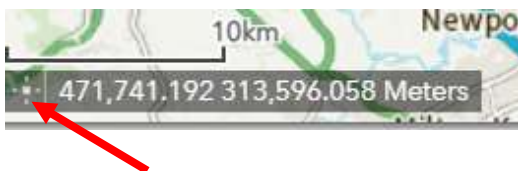
When the tool is expanded, you can also maximise or minimise it:



Coordinates

The Coordinate tool displays x- and y-coordinate values on the map. With the default coordinate system of the web map, the coordinate values change dynamically when the mouse pointer moves to locations on the map.

Coordinate Tool is available at the bottom left corner of the map.



Click the **Enable clicking the map to get coordinates** button to enable clicking the map to get coordinates. You can add a point to the map, highlight the coordinates, and make a copy of the coordinates.

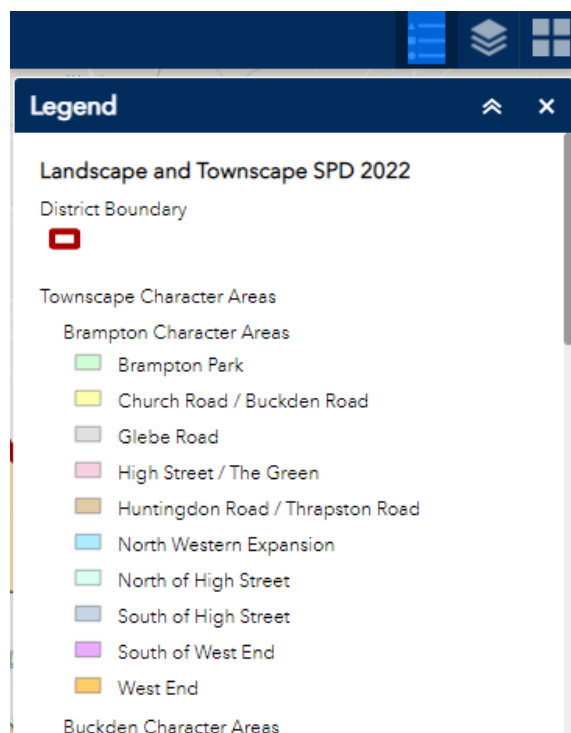
Note: you may need to maximise browser window to view **Enable clicking the map to get coordinates** button.

Map legend



Click the Legend icon to open the map legend. This will display the symbology for current checked layers which should be visible in the map. There is the ability to search the layers.

Features that are not checked will not be displayed in the Legend. Below is an example:

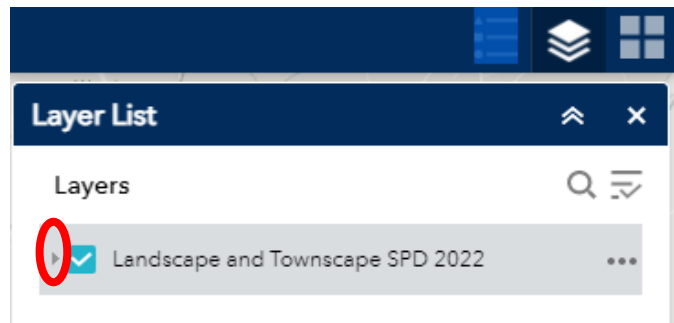


Layer list

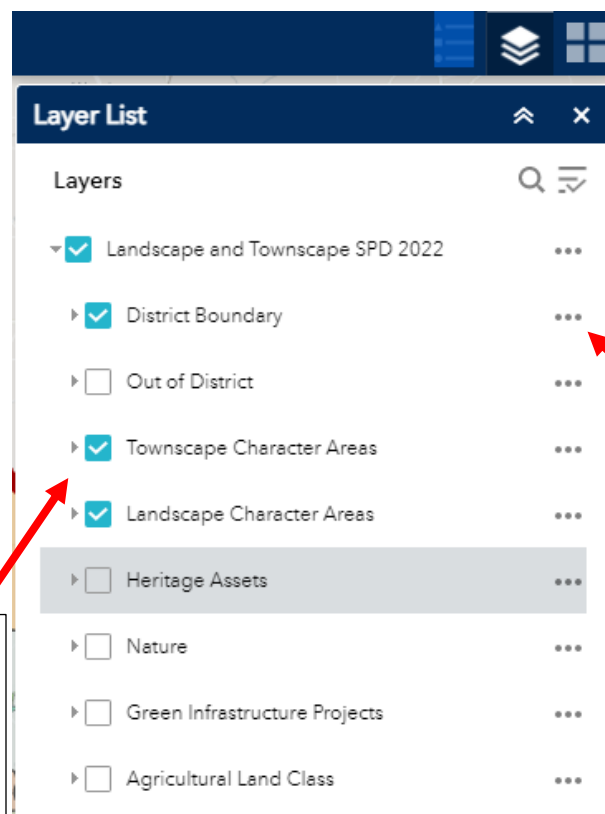


Click the Layer List icon to open the map Layer List. This will display the list of layers currently available in the map.

Click on the arrow to the left of the group layer 'Landscape and Townscape SPD 2021' (circled in red) to view individual layers in groups:



Layers which are checked will display in the map. Layers which appear grey will not display at the current zoom level. You must increase zoom level to view these items in the map.



To see the layers within each layer, click the arrow. Once on the desired layer, click the arrow next to

You can view the attribute table for the layer by

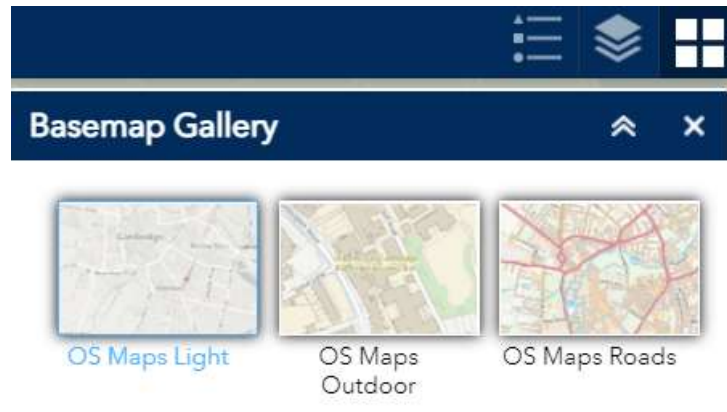
Note: Both the group layer and the individual layer contained within the group layer must be checked for individual layer to be visible in the map.

Basemap gallery



Click the Basemap Gallery icon  to open the Basemap Gallery.

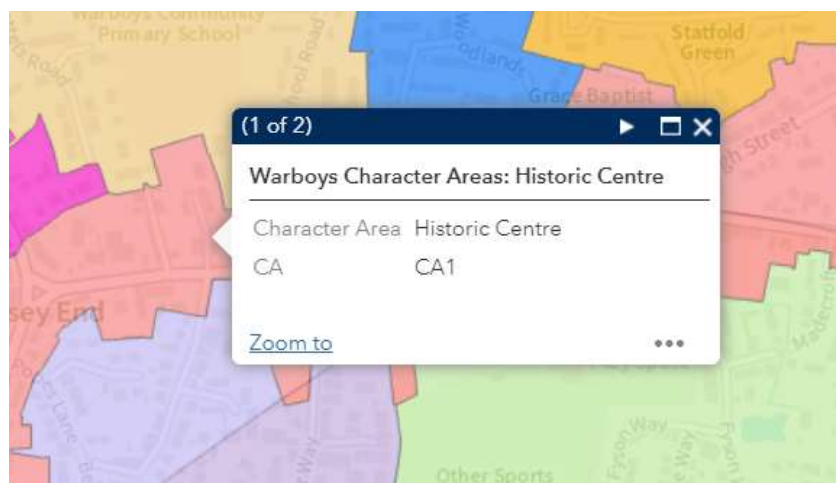
This will display the selection of basemaps available in the current map application. This allows you to select one from the gallery as the basemap for your map.



Identify/Info tool

In the map you can click on any feature to display a pop-up with attribute information.

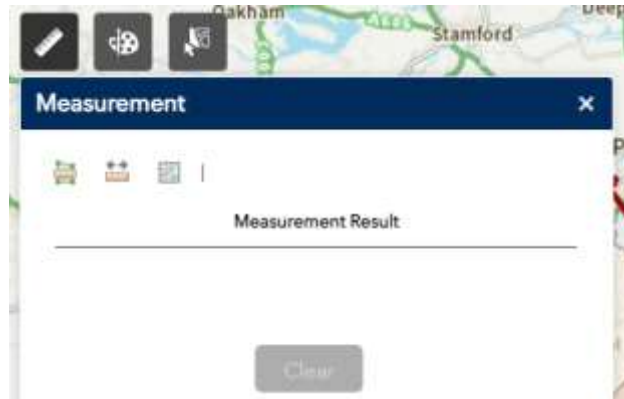
Attribute information about a feature can be obtained by clicking the cursor on the feature in the map window. If there are several visible layers at the same location, the pop up will display this like in the example below (1 of X). The results for each layer can be scrolled through by clicking the sideways arrow button.




You can open an attribute table that contains that feature by clicking the three dots in the bottom right-hand corner of the display box.

Measure tool

Click on the Measurement icon  to open the measurement tool.

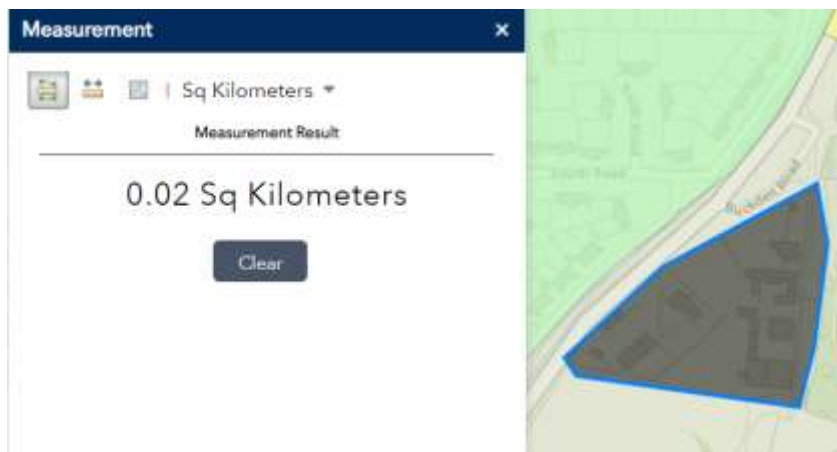


Measure area:


The area measurement tool  allows you to draw your required area by clicking the cursor freehand. The units for the results can be changed using the dropdown list.

Steps to measure area:

- When icon is highlighted, click anywhere on map to measure area
- Use drop down menu to the right of measurement icons to select units
- Click on map once to start drawing area
- Continue to click on map to outline the area you wish to measure
- Double click mouse to finish drawing line
- Measurement results will display in measurement results window
- Select Clear to clear results window

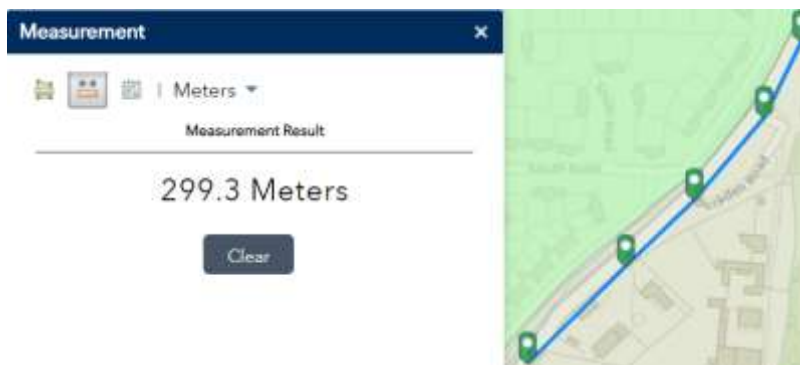


Measure distance


The distance measurement tool  allows you to draw a line to measure distances. The feature can be drawn freehand and the units selected from the dropdown list.

Steps to measure distance:

- When icon is highlighted, click anywhere on map to measure distance
- Use drop down menu to the right of measurement icons to select units
- Click on map once to start drawing line segments
- Continue to click on map to outline the area you wish to measure
- Double click mouse to finish drawing the line
- Measurement results will display in the measurement results window
- Select Clear to clear results window



Location

The location measurement tool  allows you to return the coordinates for a point by clicking on a point on the map in the units chosen from the dropdown list.


Steps to get Location coordinates:

- When icon is highlighted, click anywhere on map to retrieve coordinates
- Use drop down menu to the right of measurement icons to select units
- Coordinate results will display in measurement results window
- Select Clear to clear results window

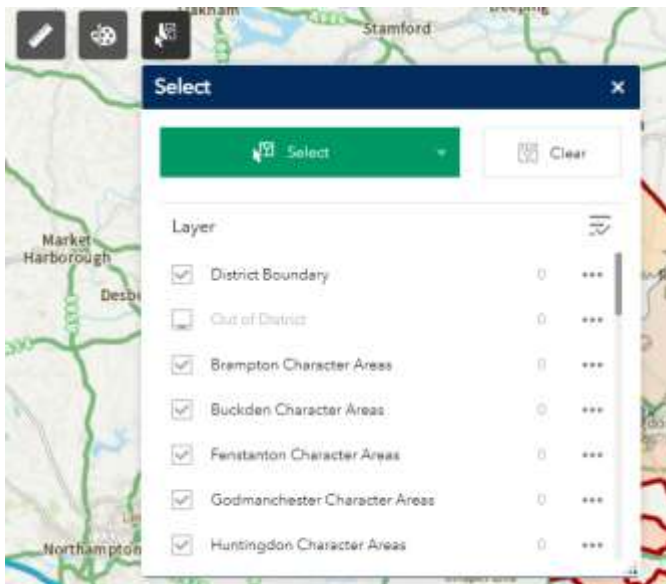


The coordinates will be returned for a point by clicking on a point on the map in the units chosen from the dropdown list.



Select tool

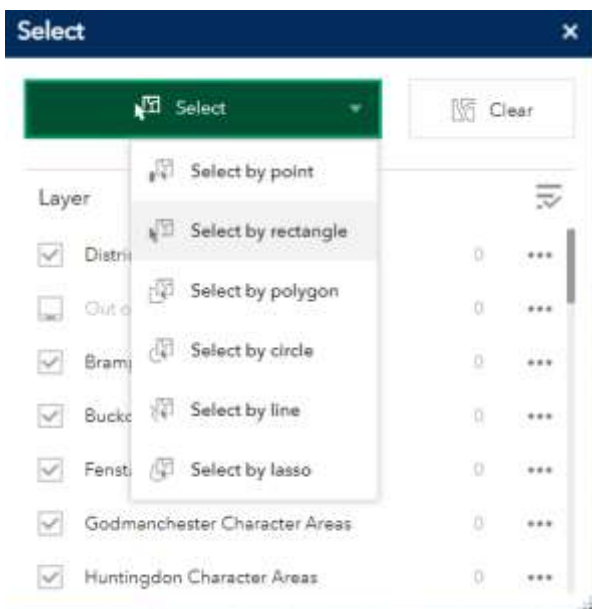
The Select tool  enables you to interactively select features on the map and take actions on the selected features.

Click on the Select icon to open select tool

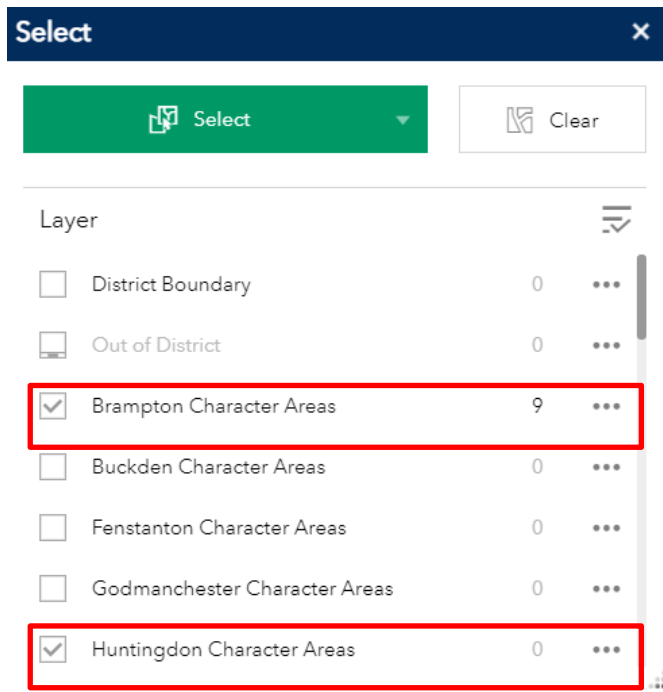


Steps to draw:

- Select Tool: Click on the Select icon  to open Select tool
- Click the select button  and choose a selection mode to begin selecting features on the map



- Click on the map to begin selecting features
- Number of features selected will be displayed by selection layer in the selection window. In the below image, the layers outlined in red have been selected. In order to select a layer, it needs to be turned on in the Layer list.



- In selection window click the layer you wish to view to see list of selected features. To view the selected features in an attribute table, click the three dots to the right of the layer (circled in red). There will also be an option to clear the selection.

