

1 No. PRUNUS SARGENTII

3 No. ELAEAGNUS PUNGENS
"MACULATA"

2 No. MAHONIA "WINTER SUN"

52 No. BERBERIS WILSONIAE

6 No. CORNUS ALBA "SIBIRICA"

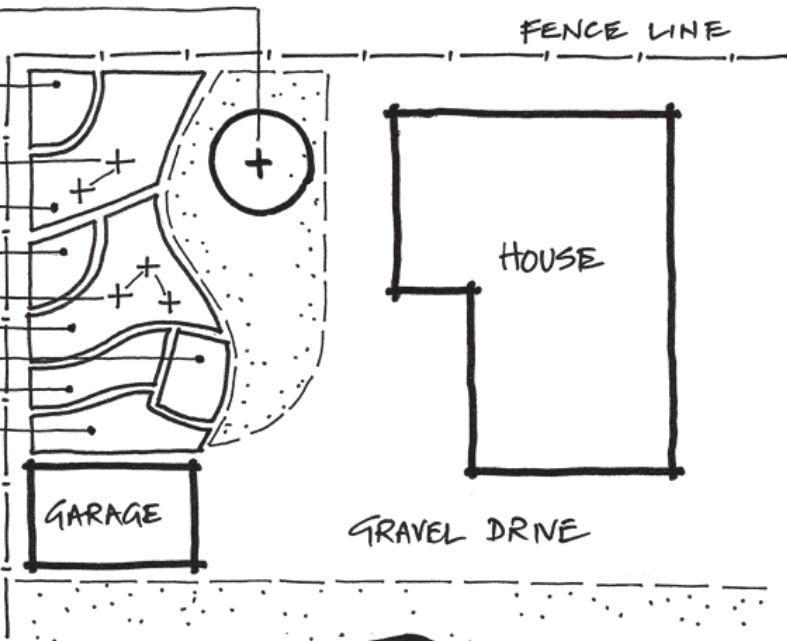
3 No. RHUS TYPHINA

36 No. HEDERA HIBERNICA

38 No. BERBERIS WILSONIAE

18 No. VIBURNUM TINUS

15 No. AMELANCHIER
CANADENSIS



PLANT SCHEDULE

TREES

Number	Plant Name	Size	Pot Size (Litres)	Centres
1 NO	PRUNUS sargentii	10-12 cm Girth	45L	

SHRUBS AND GROUND COVER

15 No	AMELANCHIER canadensis	90-120 cm	Bare root	1.00m
90 No	BERBERIS wilsonii	60-90cm	3L	500mm
6 No	CORNUS alba "Sibirica"	60-90cm	Bare root	700mm
3 No	ELAEAGNUS pungens "Maculata"	60-90cm	3L	1.00m
36 No	HEDERA helix "Hibernica"	40-60cm	2L	600mm
2 No	MAHONIA "Winter Sun"	40-60cm	3L	As shown
3 No	RHUS typhina	90-120cm	5L	As shown
18 No	VIBURNUM tinus	40-60cm	3L	700mm

NOTES

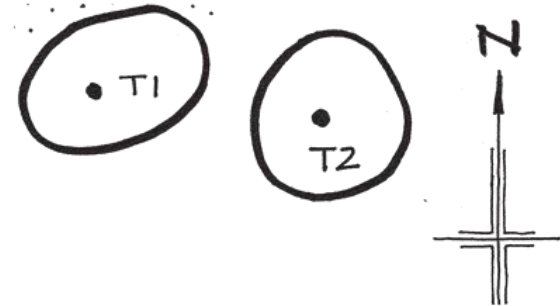
Planting areas to be cultivated to a depth of 450mm with all rubbish and stones over 55mm to be removed off site.

Spread and incorporate well rotted manure or compost over planting areas.

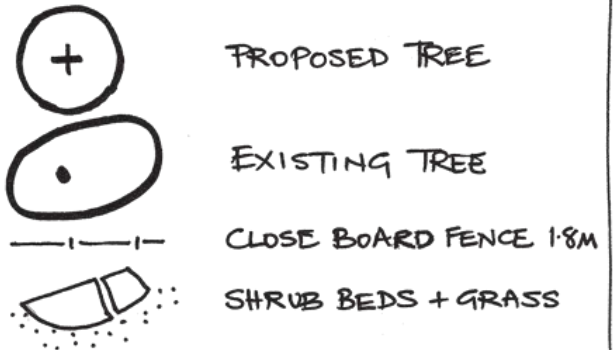
All planting to be carried out when the ground is moist but free of frost or water logging.

All plants to be of good "garden centre" quality, shrubs to be bushy with at least 3 breaks in the lower third of height.

All plants, to be thoroughly watered, prior to, and again after planting.



KEY



SITE	
TITLE PLANTING PLAN	
SCALE 1:200	PLAN No. CT/01 A
DATE 1.9.2006	DRAWN BY CT